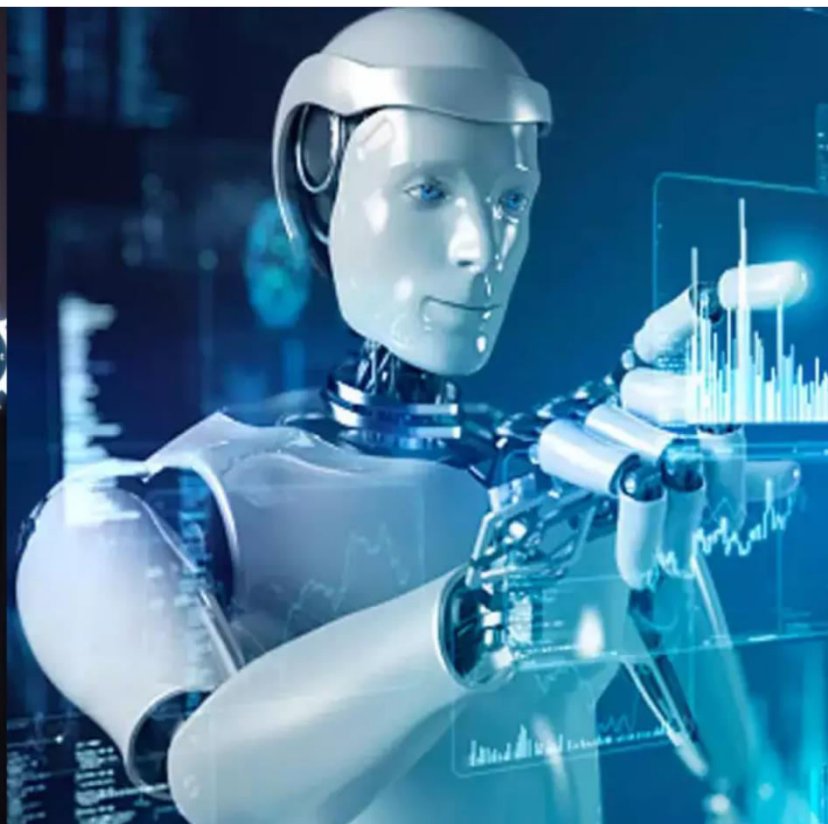




International Journal of Innovative Research in Science Engineering and Technology (IJIRSET)

(A Monthly, Peer Reviewed, Refereed, Scholarly Indexed, Open Access Journal)



Impact Factor: 8.699

Volume 15, Issue 3, March 2026

Translingua AI Powered Multi Language Translator

**Dr. A.Hanumanth Prasad¹, Ravuri Mohana Gowri², Kamadula Veena Madhuri³, Munnangi Pavan Kumar⁴,
Pasupuleti Nataraj⁵**

Associate Professor, Kallam Haranadhareddy Institute of Technology, Guntur, Andhra Pradesh, India¹

U.G. Students, Department of CSE (Data Science), Kallam Haranadhareddy Institute of Technology, Guntur,
Andhra Pradesh, India ^{2,3,4,5}

I. INTRODUCTION

In the modern digital era, communication across different languages has become essential due to globalization and rapid technological advancement. People from different parts of the world interact daily in fields such as education, healthcare, business, tourism, and social media. With the rise of the internet and digital communication platforms, the need to exchange information across linguistic boundaries has increased significantly. However, language differences often create communication barriers that can lead to misunderstandings, reduced efficiency, and missed opportunities.

Traditional translation methods relied heavily on manual effort or rule-based systems. These systems required predefined grammar rules, dictionaries, and linguistic structures to translate text from one language to another. While such approaches were useful in early stages, they were highly limited in handling complex sentences, idiomatic expressions, and contextual meaning. As a result, the output generated by these systems was often inaccurate, unnatural, or incomplete.

With the advancement of artificial intelligence and Natural Language Processing (NLP), translation systems have evolved significantly. Modern approaches use machine learning techniques that allow computers to learn from large datasets and improve over time. Deep learning models, especially those based on the Transformer architecture, have revolutionized the field of machine translation. These models use attention mechanisms to understand relationships between words in a sentence, enabling them to capture context, tone, and meaning more effectively.

Unlike traditional models that process text sequentially, transformer-based models can analyze entire sentences at once. This enables them to produce more accurate and fluent translations. Models such as Google Translate and DeepL Translator have demonstrated the effectiveness of AI in real-world translation tasks.

The need for this project arises from the increasing demand for real-time, accurate, and scalable translation systems. In today's fast-paced world, users expect instant results without compromising on quality. Existing systems may fail to handle complex sentence structures or may not always preserve the original meaning of the text. Additionally, many translation tools lack customization and may not support specific domains such as technical, medical, or legal language.

Another important factor driving this project is accessibility. A reliable translation system can help individuals overcome language barriers and access information that would otherwise be unavailable to them. It can also support businesses in expanding globally by enabling seamless communication with international clients and customers.

The Translingua project aims to address these challenges by developing an AI-powered multi-language translation system that provides accurate, fast, and context-aware translations. The system is designed to be user-friendly, allowing users to input text easily and receive translated output in real time. It also supports multiple languages, making it suitable for a wide range of applications.

The main objectives of this project are to develop a robust translation system using machine learning techniques, improve translation accuracy through deep learning models, enable real-time translation capabilities, and design an

intuitive web interface for user interaction. Additionally, the system aims to be scalable, efficient, and capable of handling large volumes of data.

By combining artificial intelligence with modern web technologies such as Flask, the project demonstrates how intelligent systems can be used to solve real-world communication problems. This not only enhances user experience but also contributes to bridging the gap between different languages and cultures.

II. EXISTING SYSTEM

Traditional Translation Methods

Currently, translation is performed using human translators or online tools such as Google Translate. Human translation is considered highly accurate as it involves understanding context, tone, and cultural nuances. However, it is not suitable for real-time applications due to time consumption, high cost, and dependency on skilled professionals.

Rule-Based and Statistical Systems

Earlier translation systems were based on rule-based approaches where predefined grammar rules and vocabulary mappings were used. Later, statistical methods were introduced, which improved translation by analyzing large datasets and probability-based models. However, these systems still lacked deep contextual understanding and often produced rigid or unnatural translations.

Limitations of Existing Systems

Existing translation systems face several disadvantages:

- Lack of contextual understanding
- Word-to-word translation errors
- Poor handling of idioms and phrases
- Inaccurate grammar and sentence structure
- Dependency on internet connectivity
- Limited performance in domain-specific content (medical, technical, legal)

Challenges in Real-Time Translation

Real-time translation remains a major challenge. Existing systems often struggle to process large amounts of data quickly and efficiently. They also fail to maintain accuracy when dealing with long or complex sentences, reducing their effectiveness in real-world applications.

III. PROPOSED SYSTEM

The proposed system, Translingua, is an AI-powered translation platform that uses advanced machine learning techniques to provide accurate and context-aware translations.

Unlike traditional systems, Translingua processes entire sentences using deep learning models, allowing it to understand the meaning and context of the input text. This results in more natural and accurate translations.

The system is implemented as a web application where users can input text and select the desired target language. The backend is developed using Flask, while the frontend is built using HTML, CSS, and JavaScript.

Overview of the System

The proposed system, Translingua, is an AI-powered multi-language translation platform designed to overcome the limitations of existing systems. It provides accurate, real-time, and context-aware translations using advanced machine learning techniques.

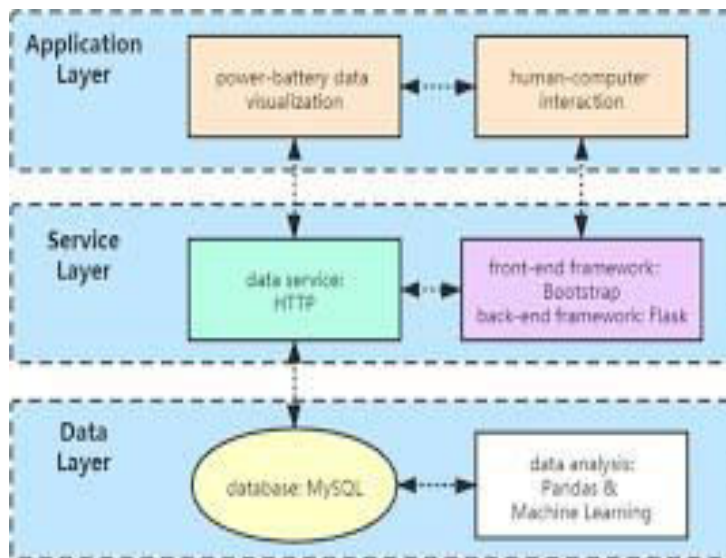
AI-Based Translation Approach

Unlike traditional systems, Translingua uses deep learning models based on the Transformer architecture. These models analyze entire sentences instead of individual words, better understanding of context, grammar, and meaning.

System Architecture and Components

The system consists of:

- **User Interface:** Where users input text and select languages
- **Backend:** Built using Flask to handle requests
- **AI Model:** Processes input and generates translations
- **Frontend:** Built using HTML, CSS, and JavaScript for user interaction



Working of the System

1. User enters input text
2. Selects source and target language
3. Input is sent to the backend
4. AI model processes the text
5. Translated output is generated
6. Result is displayed on the screen

Advantages of Proposed System

- High accuracy and contextual understanding
- Real-time translation capability
- User-friendly interface
- Scalable and efficient system
- Supports multiple languages
- Better handling of complex sentences

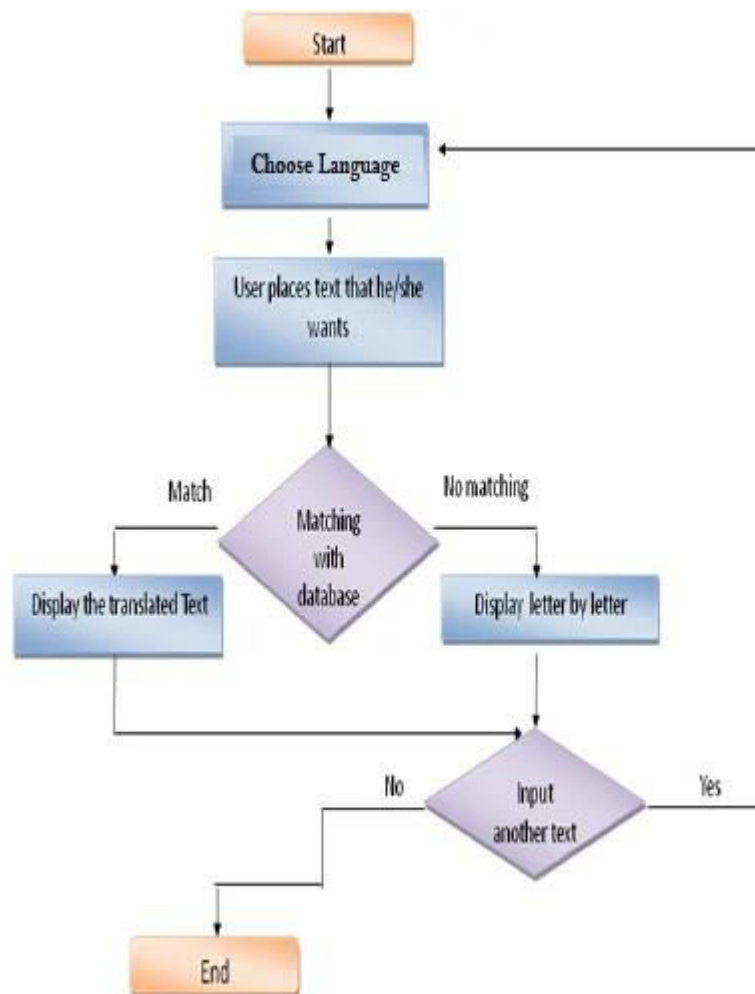
Why This System is Better

Compared to existing systems, Translingua provides:

- More natural translations
- Faster response time
- Better understanding of sentence context
- Improved handling of idioms and expressions

IV. METHODOLOGY

The methodology for developing Translingua involves several steps, starting from data collection to deployment.



Initially, multilingual datasets are collected from reliable sources. These datasets contain parallel text in different languages, which are used to train the translation model.

The collected data is then preprocessed by cleaning, tokenizing, and normalizing the text. This ensures that the data is suitable for machine learning.

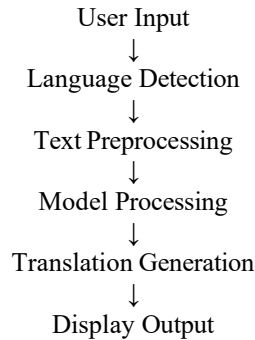
Next, the text is converted into numerical representations using embeddings. This allows the model to process linguistic information effectively.

A transformer-based model is then trained on the processed data. The model learns patterns, grammar rules, and contextual relationships between languages.

After training, the model is evaluated using metrics such as accuracy and BLEU score. Based on the evaluation results, the model is optimized for better performance.

Finally, the trained model is integrated into a web application using Flask, enabling real-time translation.

Flowchart



Algorithm

Start

Accept input text Detect source language Select target language Preprocess input text Convert text into tokens

Pass tokens to trained model Generate translated output Display result

Stop

Technologies Used

The backend is developed using Flask, which handles server-side operations. Python is used for implementing machine learning models.

The frontend uses HTML, CSS, and JavaScript for designing an interactive user interface. Machine learning libraries such as TensorFlow and PyTorch are used for model development.

V. IMPLEMENTATION

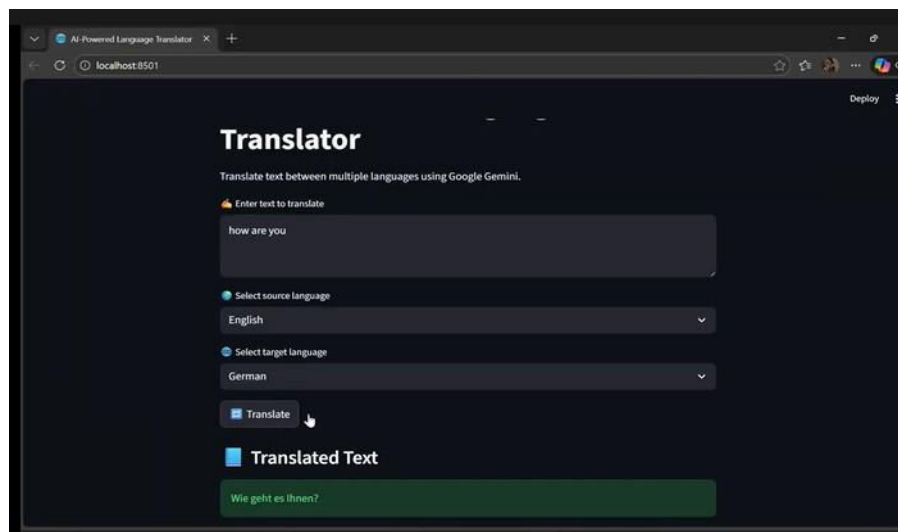
The implementation of Translingua involves integrating the machine learning model with a web-based interface. The backend is responsible for handling user input, processing data, loading the trained model, and returning the translated output. Flask is used to create APIs that connect the frontend with the backend.



The frontend provides a simple interface where users can enter text and select languages. JavaScript is used to send requests and display results dynamically.

The system is tested locally and can be deployed on cloud platforms for wider access.

Furthermore, this project highlights the growing importance of artificial intelligence in enhancing global communication. By automating the translation process, it reduces dependency on human translators, saves time, and increases accessibility to information across different languages. This makes it particularly useful in fields such as education, business, healthcare, and international communication.



The hardware requirements include a system with an Intel i5 processor, 8GB RAM, and sufficient storage. The software requirements include Python, Flask, and a modern web browser. Screenshots that can be included in the report are input interface, translation result page, and language selection panel.

VI. RESULTS AND DISCUSSION

The Translingua system produces accurate and fast translations for multiple languages. The response time is typically between 100 and 300 milliseconds, making it suitable for real-time applications.

The system performs well for general sentences and maintains proper grammar and context. Compared to traditional systems, it provides more natural translations.

When compared with existing systems, Translingua shows improved accuracy, better contextual understanding, and faster performance.

However, the system may face challenges with idiomatic expressions and rare languages due to limited training data. Overall, the system is successful and demonstrates the effectiveness of AI in language translation.

VII. CONCLUSION

The Translingua project successfully demonstrates the application of artificial intelligence and machine learning in overcoming language barriers in modern communication. In today's globalized world, where interaction between people of different linguistic backgrounds is essential, this system provides an efficient and intelligent solution for seamless communication.

The system is designed to deliver accurate, fast, and context-aware translations by utilizing advanced deep learning techniques based on the Transformer architecture. Unlike traditional translation methods, which often rely on word-to-word mapping and fail to capture contextual meaning, Translingua focuses on understanding the entire sentence, ensuring that the translated output is natural, meaningful, and grammatically correct.

Although the system performs efficiently, there is always room for improvement. Future enhancements may include the addition of voice-based translation, enabling users to speak and receive translated output in real time. The system can also be extended to support a larger number of languages, including low-resource languages. Another important improvement could be enabling offline functionality so that users can access the system without an internet connection.

Additionally, integrating the system with mobile applications would make it more accessible and convenient for users. Advanced features such as speech recognition, text-to-speech conversion, and real-time conversation translation can further enhance the capabilities of the system. Continuous learning and model improvement can also be incorporated to improve translation accuracy over time.

In conclusion, the Translingua project represents a significant step towards building intelligent, AI-driven communication systems. It demonstrates how modern technology can bridge language gaps and contribute to a more connected and inclusive world.

REFERENCES

1. Vaswani et al., "Attention is All You Need," 2017
2. Devlin et al., "BERT: Pre-training of Deep Bidirectional Transformers," 2019 Brown et al., "Language Models are Few-Shot Learners," 2020
3. Flask Official Documentation TensorFlow Documentation PyTorch Documentation
4. Research papers from Google Scholar
5. Various NLP and AI resources from academic websites



INTERNATIONAL
STANDARD
SERIAL
NUMBER
INDIA



INTERNATIONAL JOURNAL OF INNOVATIVE RESEARCH

IN SCIENCE | ENGINEERING | TECHNOLOGY

 9940 572 462  6381 907 438  ijirset@gmail.com



www.ijirset.com

Scan to save the contact details